

## RCT CR-N

Concrete surface retarder



**For the production of architectural washed concrete of different wash depths**

### Product description

RCT CR-N is a ready-to-use, solvent-based concrete surface retarder for the production of exposed aggregate concrete by the negative wash-out method. It is available in different grades for different wash-out depths (see table).

### Fields of application

RCT CR-N is the ideal solution for the production of washed concrete surfaces, such as facade cladding, noise barriers, horticultural elements, concrete products, etc., but especially for architectural concrete and complicated elements often produced under difficult conditions.

### Application advantages

RCT CR-N is available in thirteen different types, easily distinguishable by color. The product is easy to stir up and is particularly economical due to the fact that the formwork is coated only once per application. In addition, mold cleaning is minimal: the mold is simply swept clean after the residues have dried completely.

### Processing instructions

Stir RCT CR-N well with a whisk before each application.

### Application

RCT CR-N is applied sparingly and evenly to the mold with a short-pile paint roller. After complete drying, at 20°C approx. 90 minutes (at higher temperatures correspondingly shorter), the concrete can be placed.

The concrete formulation, the production and time sequence, the element thickness and the dependent setting temperature must be determined in practical tests. Segregation and excessive setting speeds must be excluded in order to achieve optimum results. The concrete must not set until approx. 1 hour after compaction.

### Available types:

CR N	Color*	Aggregate size	Wash-out depths*
Nano	Beige	0–3 mm	approx. 0,1 mm
N/Mikro	Turquoise	0-3 mm	approx. 0,2 mm
N/01	Blue	0-4/8 mm	approx. 0,5 mm
N/02	Brown	2-4/8 mm	approx. 1,0 mm
N/10	Green	4-8/10 mm	approx. 1,5 mm
N/25	Yellow	4-8/10 mm	approx. 2,0 mm
N/50	Red	6-9/12 mm	approx. 2,5 mm
N/80	Gray	8-11 mm	approx. 3,0 mm
N/100	Mustard	8-16 mm	approx. 3,5 mm
N/130	White	12-16 mm	approx. 4,0 mm
N/200	Orange	16-22 mm	approx. 5,0 mm
N/300	Red-Violet	16-22 mm	approx. 6,0 mm
N/400	Blue-Violet	18-25 mm	approx. 7,0 mm

\*Color and washout depth may differ from the CR N product range.

The washout depths are guide values and depend on the cement class, w/c ratio, aggregate grain size and flour content. We will be pleased to advise you in determining the suitable type.

### Special instructions

Close container tightly.

### Consumption

approx. 80 - 200 g/m<sup>2</sup>.

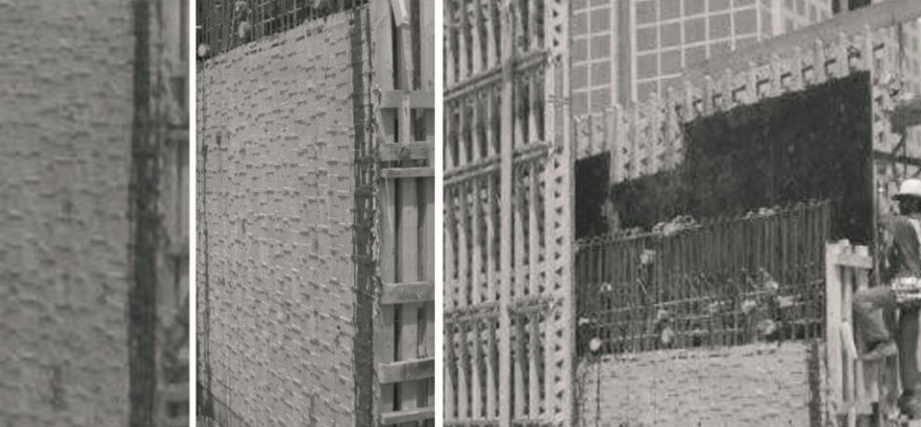
Deviations are possible due to the roughness of the substrate.

### Packaging

20 kg container

### Storage

Store in cool, well-ventilated, suitable rooms. If exposed to low temperatures, warm up slowly to room temperature and stir before use.



The formwork is heated at the earliest 2 hours after compaction. The optimum vibration time must be determined by trial. All data determined in the test must be transferred to the production! Unavoidable changes in the parameters determined in the test can usually be compensated by using other CR types or changing the production process or the concrete mix. When using new, plastic-modified formwork, the pH value must be checked. If the surface is alkaline, we recommend neutralizing the formwork before the first application of CR-N.

### **Washing out the elements**

As a rule, after 24 hours. However, the elements should remain in the mold for at least 8 hours. For CR-N applies: Later washout, e.g. after 48 or 72 hours, is quite possible after appropriate preliminary tests, but the washout rhythm must be observed within a coherent series. In order to compensate for possible fluctuations in the production parameters and to achieve a reduction in the washout depth, the elements can exceptionally be exposed to the air for between 2 and 8 hours before washing out (the time is also determined in a preliminary test). Washing out is most economically carried out by means of a high-pressure cleaner. Dry brushing and subsequent washing is also possible.

### **Tools**

The cleaning of the tools is done with CR cleaner. Electrical equipment used in conjunction with CR-N (electric whisk, electric sprayer) should be explosion-proof. Teflon seals are recommended.

### **Shelf life**

In closed original packaging 12 months from date of manufacture.

### **Safety**

See EC safety data sheet.

### **Protective note**

RCT CR-N contains solvents. Ensure ventilation of the work area. Smoking and naked flames must be avoided at all costs. Protect skin and eyes from material splashes. Please observe the safety data sheet and the information on the label.